
B. J. McGlone & Co., Inc.



Press Release

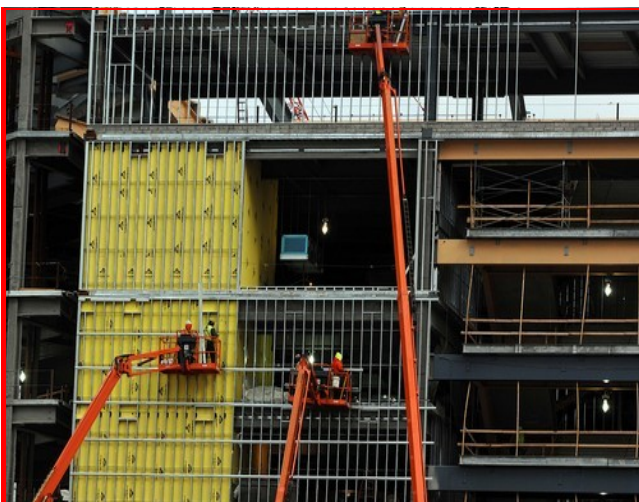
August - 2010

B.J. McGlone & Co., Inc. Wins Excellence in Construction Award

Not for the faint of heart. That's what many said when they looked 140 feet in the air at B.J. McGlone's carpenters in buckets, telescoping up the side of the New Meadowlands Stadium, installing light gauge steel studs which formed the exterior of the new Giants/Jets football stadium. The New Meadowlands Stadium, located in East Rutherford, New Jersey, is part of the Meadowlands Sports Complex adjacent to the recently demolished Giants Stadium which stood since 1976. B.J. McGlone & Co., Inc. was contracted by Skanska USA to perform the nearly 5 million dollar contract for the cold-formed metal framing throughout the exterior.

Small buckets cradled McGlone's men, in extreme conditions, as they stood oscillating 140 feet above the ground in articulated boom lifts that provided a platform to reach the top of the stadium's exterior to install the light gauge steel studs that formed the substrate to the illuminated panels. So extreme were the conditions DIY Television Network featured McGlone's work on "Project Extreme: Building an NFL Stadium."

New Meadowlands Stadium - East Rutherford, New Jersey



The Project

Another unique challenge was the design involved in building a massive stadium. Extraordinary deflection criteria is required to support a variable live load of 82,500 jumping, screaming fans that run for the exits at the conclusion of the game. Industry veteran B.J. McGlone & Co., Inc. engineers worked in unison with the design/build team of Skanska USA before construction started to ensure that a safe and effective design was implemented.

The experience and expertise of B.J. McGlone & Co., Inc. provided for a successful partnership with Skanska USA in designing, building, and completing what has become the largest single attraction in the State of New Jersey and the home of Super Bowl XLVII in 2014.

B.J. McGlone & Co., Inc. is proud to have the Drywall Interior Systems Contractors Association (DISCA) present it with the "Excellence in Construction Award" in Exterior Light Gauge Framing for its work performed at the New Meadowlands Stadium.

B.J. McGlone & Co., Inc.
Exceeding Client's Expectations
40 Brunswick Avenue
Edison, New Jersey, 08817

Phone: 732-287-8600
Fax : 732-287-9442
E-Mail: bmcdglone@bjmcdglone.com